



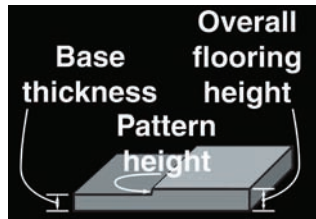
Garage Flooring - Coin Pattern

Commercial (75 mil) or Industrial (85 mil) Thicknesses

- Coin pattern gives extra attractive appearance and reduces amount of dirt tracked into home.
- Keep your garage, shop or basement floors looking like new.
- Guard your floor year round from corrosive road materials such as antifreeze, oil, salt and battery acid. Prevents concrete deterioration.
- Easy to move. Can be cleaned inside or outside of garage. Non porous surface allows easy cleanup of oil and antifreeze and can be cleaned with soap and water. Vinyl floor cleaners may be needed to remove stubborn debris. This is not a stain proof product.
- Limitless home, industrial and commercial applications. Designed to provide years of service.
- Available in standard stock sizes and custom sized lengths. Easy to cut and trim to size.
- Wall to Wall installations available. See Product Spec Sheet for instructions.



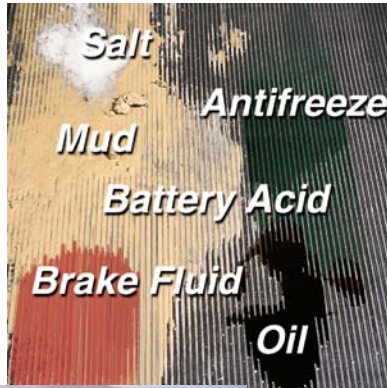
Easy to Install and Seam



The Perfect Garage Flooring

Product Specifications

Construction:	Non Porous Polyvinyl
Backing:	Non Porous Polyvinyl
Edging:	Square Edging
Base Thickness:	Industrial 75 mil (.075") or Commercial 85 mil (.085")
Surface:	Coin Pattern Non Porous Polyvinyl
Durability:	7 ●●●●●○○○
Warranty:	Limited 5 Year Warranty
Order Time:	Stock sizes- 2-3 weeks Custom sizes 3-4 weeks



- Standard Sizes:**
Commercial (75 mil)- all colors:
7.5' x 17', 8' x 22', 10' x 24'
Industrial (85 mil)- Slate Grey, Midnight Black only:
9' x 44', 9' x 60'
- Custom Sizes:**
Commercial (75 mil)- all colors:
7.5', 8' or 10' widths by custom lengths up to 100 lineal feet in 1' increments.
Industrial (85 mil)- Slate Grey, Midnight Black only:
9' widths by custom lengths up to 100 lineal feet in 1' increments.

SIZES



Easy to Maintain and Clean



Garage Floor- Coin Pattern Colors



Commercial (75 mil)- all colors available

*Industrial (85 mil)- Slate Grey, Midnight Black only

Garage Flooring Limited Product Warranty

Warranty Coverage

Direct Mat warrants to the original purchaser (Buyer) only that garage vinyl mats and garage flooring product represented by Direct Mat will be free from defects in material and workmanship under normal use and service for a period of five (5) years from the date of purchase. THIS WARRANTY SHALL NOT APPLY AND NO WARRANTY ON ANY KIND SHALL EXIST IF THIS PRODUCT HAS BEEN SUBJECT TO ABUSE, MISUSE, NEGLIGENCE OR ALTERATION OF ANY TYPE OR CAUSE. In addition, Direct Mat is not responsible for defects resulting from improper installation or use, or from uses beyond design capability. In addition to foregoing limitations, Direct Mat's limited warranty shall not cover surface stains including stains resulting from asphalt, driveway sealer and rubber wheels, defects resulting from improper maintenance or installation, damage from improper usage including, without limitation, burns, cuts, tears, scratches, scuffs, indentation damage from rolling loads, improperly casted carts, damage or discoloration from adhesive or floor care products not recommended by DM, extended direct exposure to sunlight, excessive moisture, alkaline, hydrostatic pressure damage from the subfloor, mold or mildew, installation over gypsum based patching and leveling compounds or difference in color between samples or photographs and the actual flooring. Direct Mat, in its sole discretion, shall determine whether or not the product is defective or otherwise covered or not covered by this warranty. No actions for breach of this warranty may be commenced more than one (1) year after occurrence of the alleged breach. This warranty is not transferable. Customer must notify Direct Mat of all manufacturer defects within 60 days of purchase. Proof of purchase date will be required.

Limitations of Liability

Direct Mat shall not be liable for the loss of use, loss of time, inconvenience, loss or revenue or any other indirect, consequential, special or incidental damages whether based upon breach of the above warranty, breach of contract, negligence, tort or under any other legal theory. Direct Mat makes no warranties of any kind, expressed or implied, other than as herein expressly provided and Direct Mat specifically disclaims the implied warranties of merchantability and fitness for a particular purpose. Some states do not allow limits on warranties, or on remedies for breach in certain transactions, so the above limitation may not apply.

Exclusive Remedy

Buyer's remedy for breach of Direct Mat warranty is repair or replacement, at Direct Mat's option, within a reasonable time after notice of defect. In the event that DM is unable to repair such product, Direct Mat at its option, shall either replace the defective product or refund the purchase price thereof. These remedies are the exclusive remedies for breach of Direct Mat warranty. Direct Mat shall not be liable for any other charges incurred, including installation cost, as a result of a defective product. In the event that Buyer makes any claim under Direct Mat warranty, Direct Mat reserves the right to require any product to be returned for inspection at Buyer's expense, to Direct Mat factory in Ringgold, GA. No employee of Direct Mat or any other person is authorized to make any additional warranty or to change the Warranty. Only Direct Mat is authorized to provide warranty service. For warranty information, please call or write to : Customer Service, P.O. Box 1068, Ringgold, GA 30736, Telephone (800) 295-3932.

STOP & READ

Initially, the Garage Flooring will have curl marks due to being rolled on a core or folded in a box for shipment (this is normal). Wipe up any oil and chemicals from floor before rolling out product.

Unroll option 1: For lay flat results, unroll Garage Floor Protector in the sunlight on a clean driveway. The warmer the conditions the quicker curls will straighten out and lay flat. Use wide push broom, push air out from center and work your way out (side to side and length to length). Repeat if necessary. Place on garage floor when desired and repeat broom out.

Unroll option 2: If you wish to unroll product directly on the garage floor, sweep garage floor clean of debris and unroll Garage Floor Protector. For best results, start unrolling process at the garage entrance; finishing at the back of the garage. Note: In cool to cold conditions it may take 72+ hours for most curl marks to lay flat depending on the temperature. Be sure to push out air with broom (It is OK to park your car on it during this time).

NOTE: for custom fit, allow product to relax in place before trimming around edges and corners. If you choose to tape down edges or seam between two floor protectors, we recommend using indoor-outdoor carpet tape.

Exterior use: If product is used under extreme heat, such as direct sunlight, the product may expand or contract a small amount after laying flat. For custom fit, allow product to relax in place before trimming around edges and corners.

The longer is sets, the better it will look.

Cleaning & Care:

Surface is easily washed with floor soap and water. Product can be easily washed off inside or outside of garage. Brush or sweep with cool water using a broom or sponge squeegee. Mild soaps and other household detergents suitable for floors are usually effective. Never leave harsh detergents or chemicals on product. Some people prefer moving the product outside and hosing it off. Normal household vinyl cleaners may be used to increase longevity and to remove stubborn debris. Certain automotive vinyl products may cause surface to become slippery. Use a non-slip vinyl protector such as a clean-and-shine floor cleaner. After cleaning, apply a coat of floor polish for vinyl floors to add a long-lasting, high luster finish, even to older garage floor protectors.

This is not a stain-proof product-certain dyes, inks, rubber tires, and chemicals may cause permanent staining. Some non-permanent stains can be removed with spray-on Brake and Tool Cleaner, found in many auto parts stores, without damaging the product. However, use of Brake and Tool Cleaner may cause product discoloration. Never use harsh chemicals such as tar remover or kerosene on this product.

Caution – Safety Warning

Any floor surface may become slippery when moisture or debris is present. Proper care and cleaning of vinyl flooring will reduce the likelihood of slips and falls. Always wipe up any oil, chemicals, or other fluids that may drip or leak from vehicle to prevent hazardous, slippery conditions. Always dispose of hazardous materials properly. Never leave chemicals on product or wash into sewer system.

Leaving chemicals on the product for a long period of time may cause damage. If concrete floor has been treated with certain sealers prior to mat installation, sealer may break down over time and adhere to back of mat without causing damage to mat. Some motorcycle kickstands may cut or damage this product.