



Soft Step is the most durable anti-fatigue mat in the industry. Soft Step utilizes a 3/8" thick vinyl cushion and encapsulates it with a durable, chemical resistant nitrile rubber. This makes the mat water proof and long lasting.

- Durable nitrile rubber surface and backing
- Available in single, linkable and modular style
- Chemical, oil and animal fat resistant
- OSHA approved colored borders available
- Heel resistant
- Waterproof

Product Specifications

Construction:	Molded Plus Cushion
Backing:	Nitrile Rubber
Edging:	Nitrile Rubber Border
Thickness:	1/2" (13mm)
Surface:	Nitrile Rubber
Durability:	9 ●●●●●●●○
Warranty:	2 year
Order Time:	1 week

Soft Step

1/2" Ultra Durable Anti-Fatigue Scraper Matting



Soft Step w/ Grip Top



Nitrile Rubber Backing w/ Grip Nobs



Available w/ OSHA Approved Colored Borders



Grip Top w/ Yellow Border



Soft Step

SIZES

- Standard:**
- 2' x 3' (22.75" x 34.25")
 - 3' x 5' (34.25" x 59")
 - 3' x 10' (34.25" x 116.5")

Soft Step- Linkable

1/2" Linkable Anti-Fatigue Scraper Matting

Soft Step- Linkable

SIZES

- Standard:**
- End- 3' x 5' (34" x 59.875")
 - Middle- 3' x 5' (34" x 61.25")



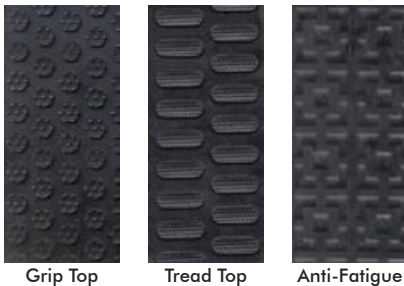
Linkable for Long Runners

Soft Step- Modular Tile

SIZES

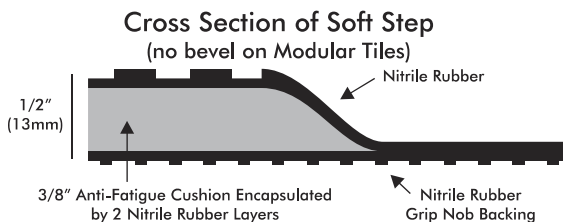
- Standard:**
- 3' x 4' (33" x 45")

Available Surfaces (Black Only)



Soft Step- Modular Tile

1/2" Modular Anti-Fatigue Tiles



Phone: **800-295-3932**
 Fax: 706-937-4425
 email: directmat@directmat.com
 website: www.directmat.com



Direct Mat
 PO Box 1068
 Ringgold, GA 30736

PRODUCT DESCRIPTION: **SOFT STEP Anti-Fatigue**

GENERAL SPECIFICATIONS:

SURFACE:	Type:	100% Grease Resistant Nitrile Rubber
	Durometer:	65
BACKING:	Type:	.375" Nitrile Rubber
	Thickness:	.140" -Border
		.50" - Body
	Density:	18-20 lbs/ff ³

FEATURES:

- U.V. Stable
- Nitrile Rubber "shell" protects foam from wear and contamination from moisture and chemicals.
- Grease proof - highly resistant to chemicals.
- Natural rubber foam offers outstanding anti-fatigue qualities.
- Rubber borders will not curl up or break off.
- Very durable.
- Low profile with beveled edges reduces trip hazards.
- Gripper backing: Minimizes movement
- Available with OSHA Safety Borders in yellow, orange, green, and red.
- Resistant to damage from shoe heels and chair legs.
- Anti-Static and conductive, okay for computer rooms and electronic manufacturing.
- Can be used in welding areas, wet areas, and oily areas.
- Modular Soft Step can be used to cover most any area that requires anti-fatigue. Widths of 3', 4', 6', 8', 9', 10', 11', 12', etc. can be achieved.
- Mats available in two skid resistant tops for varied applications.

Texture Surface:	Dry areas where traction is not required.
Grip Surface:	Wet or oily areas where maximum traction is needed.
- ANSI/ESD 57-1 1994 Protection of Electrostatic Discharge of Susecptible Items: Flooring Materials

Surface to Ground -	<u>50% Relative Humidity</u>	<u>12% Relative Humidity</u>
TEXTURE SURFACE:	3.5 x 10 ⁵ ohms @	3.4 x 10 ⁵ ohms
GRIP SURFACE:	9.4 x 10 ⁶ ohms @	1.3 x 10 ⁷ ohms
Surface to Surface -	<u>50% Relative Humidity</u>	<u>12% Relative Humidity</u>
TEXTURE SURFACE:	8.0 x 10 ⁵ ohms @	1.3 x 10 ⁶ ohms
GRIP SURFACE:	2.7 x 10 ⁷ ohms @	3.3 x 10 ⁷ ohms
- Passes Flammability Standard DOC-FF-1-70
- Static Decay Test Method 4046 Federal Standard 101B/NFPA 99 Chapter 12 Section 4.1.3.8 (f) (3) (i)
 Maximum Time Recorded: .01 seconds.
- ASTM C1028-96 Static Coefficient of Friction:

TEXTURE SURFACE:	Dry - .88
GRIP SURFACE:	Dry - .70
- ASTM D624 Tear Strength Die C: 62.5 lbs.
- ASTM D624 Trouser Tear Strength: 69.1 lbs.

Phone: **800-295-3932**
 Fax: 706-937-4425
 email: directmat@directmat.com
 website: www.directmat.com



Direct Mat
 PO Box 1068
 Ringgold, GA 30736

Soft Step- 1/2" (Page 12)

SIZE	ACTUAL SIZE		1-6		7-30		31-49		50+	WEIGHT
2' x 3'	22.75" x 34.25"	\$	61.20	\$	58.40	\$	56.40	\$	52.60	10.0
3' x 5'	34.25" x 59"		153.00		145.80		141.40		131.40	25.5
3' x 10'	34.25" x 116.50"		306.00		291.40		282.80		263.20	51.0
2' x 3' - Striped Border	22.75" x 34.25"		67.40		64.00		62.20		58.00	10.0
3' x 5' - Striped Border	34.25" x 59"		168.20		160.20		155.40		144.60	25.5
3' x 10' - Striped Border	34.25" x 116.50"		336.40		320.40		310.80		289.20	51.0
Normal Shipping- less than 1 week.			<u>Surface-</u> Specify Grip Top (standard), Tread Top or Anti-Fatigue Top. <u>Backing-</u> Rubber w/ Gripper only							

Soft Step- Linkable- 1/2" (Page 12)

SIZE	ACTUAL SIZE		1-6		7-30		31-49		50+	WEIGHT
3' x 5'- End	34" x 59.875"	\$	179.60	\$	171.20	\$	166.00	\$	154.40	28.5
3' x 5'- Middle	34" x 61.25"		179.60		171.20		166.00		154.40	28.5
3' x 5' - End- Striped Border	34" x 59.875"		197.40		188.00		182.60		169.80	28.5
3' x 5' - Middle- Striped Border	34" x 61.25"		197.40		188.00		182.60		169.80	28.5
Normal Shipping- less than 1 week.			<u>Surface-</u> Specify Grip Top (standard), Tread Top or Anti-Fatigue Top. <u>Backing-</u> Grip nobs only							

Soft Step- Modular- 1/2" (Page 12)

SIZE	ACTUAL SIZE		1-6		7-30		31-49		50+	WEIGHT
3' x 4' Modular Tile	33" x 45"	\$	172.80	\$	162.40	\$	157.20	\$	148.60	23.0
4" Yellow Edging	1/2" x 4" x 1'		5.00		4.60		4.60		4.20	1.0
4' Aluminum Edging	1/2" x 1" x 4'		16.20		15.20		14.80		14.00	1.0
100' Installation Tape (7/8")- for Aluminum Edging	7/8" x 100'		13.80		13.00		12.60		12.00	1.0
100' Installation Tape (1.5")	1.5" x 100'		25.00		23.60		22.80		21.60	1.0
Silicone Caulking	Tube		8.00		7.60		7.40		7.00	1.0
Normal Shipping- less than 1 week.			<u>Surface-</u> Specify Grip Top (standard), Tread Top or Anti-Fatigue Top. <u>Backing-</u> Grip nobs only							